



# Wright Marshall

Estate Agents

## 9 Drury Lane Knutsford WA16 6HA



### £600,000

1 Princess Street, Knutsford, Cheshire, WA16 6BY

T. 01565 621624

[Knutsford@wrightmarshall.co.uk](mailto:Knutsford@wrightmarshall.co.uk) /

[Cheshirelettings@wrightmarshall.co.uk](mailto:Cheshirelettings@wrightmarshall.co.uk)



Occupying an exceptional position just moments from the heart of Knutsford and adjacent to the historic grounds of Tatton Park, The Tower House is a truly remarkable home, an exquisite piece of local heritage designed by the celebrated architect Richard Harding-Watt in the late 19th century.

Constructed circa 1898 in the distinctive Italian style, this Grade II listed residence is rich in character and architectural intrigue. Originally crowned with a striking pinnacle, the property remains an iconic and highly recognisable landmark within the town.

Set across five floors, the accommodation offers an extraordinary level of versatility, presenting a unique opportunity to curate a home of both elegance and individuality.

A welcoming entrance hall, complete with original hardwood flooring and bespoke storage, sets the tone for the interiors beyond. The principal reception spaces are both atmospheric and inviting, featuring Cheshire brick fireplaces, a log-burning stove, and views across the private courtyard. The kitchen, positioned to the rear, enjoys a charming outlook and connects seamlessly with the home's entertaining spaces.

The flexibility of the layout allows for a variety of living arrangements. The current principal bedroom is situated on the lower ground floor; however, the upper levels of the tower, offer the potential to create a truly exceptional master suite spanning multiple floors.

Rising through the tower itself, a series of beautifully proportioned rooms culminates

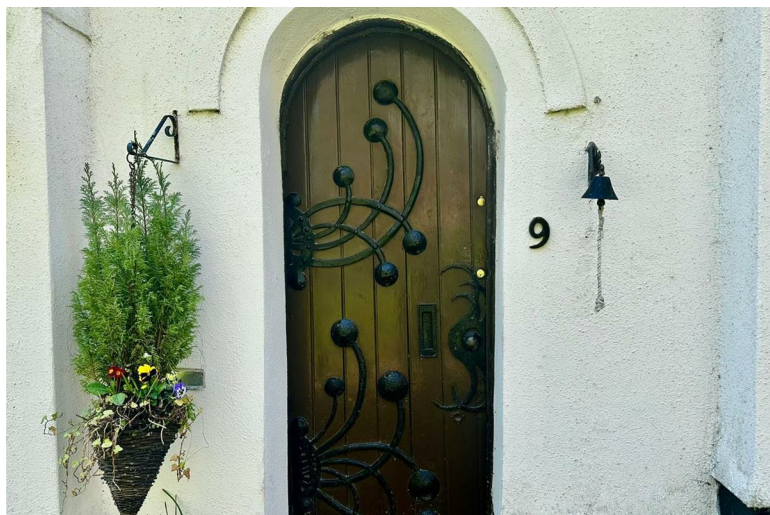
in access to the rooftop, where far-reaching views across The Moor provide a spectacular and ever-changing backdrop.

Externally, the property continues to impress. A beautifully designed, south-facing paved terrace offers a private and tranquil retreat, an oasis of calm in the very centre of Knutsford. The rooftop, also accessible via an internal staircase, further enhances the sense of space and exclusivity.

While the property has been carefully maintained, it now presents a rare opportunity for sensitive enhancement. For a discerning purchaser, this is a chance to restore and elevate a home of significant architectural merit, while honouring its Grade II listed status.

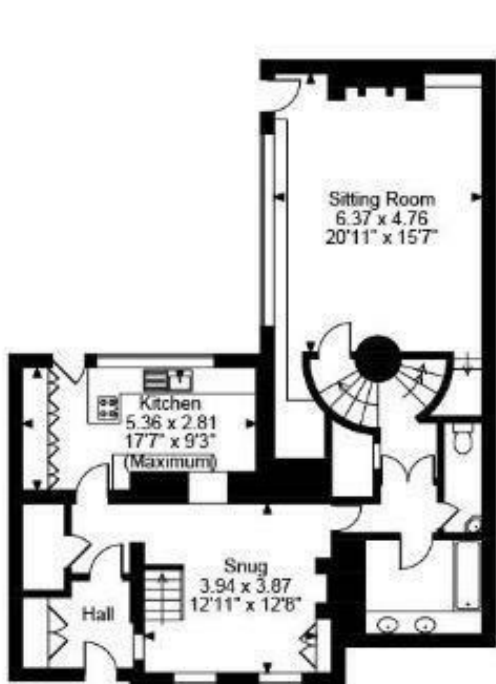
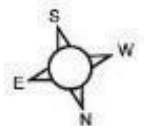
Drury Lane is a quiet and highly regarded address, and opportunities of this nature are seldom available.

Viewings are strictly by appointment only.

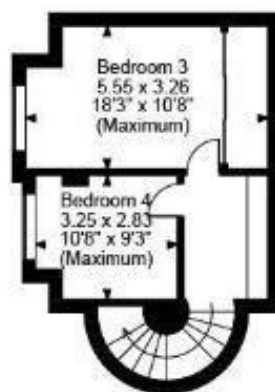




**Tower House, Drury Lane, Knutsford**  
**Approximate Gross Internal Area**  
**2442 Sq Ft/227 Sq M**



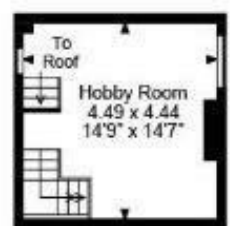
**Ground Floor**



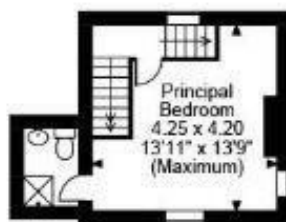
**Lower Ground Floor**



**Store Room**



**Fourth Floor**



**First Floor**



**Second Floor**



**Third Floor**